

Spinal Cord  
Outcomes

S C P E



Partnership  
Endeavor

The 1st Annual  
SCI Investor Symposium

# Mission: Spinal Cord Outcomes Partnership Endeavor

An academic-industry-agency partnership established in 2007 to:

- Enhance the development of clinical trial and clinical practice protocols
- Validate therapeutic interventions for spinal cord injury, leading to the adoption of improved best practices.



# SCOPE Leadership



**Jane Hsieh, MSc**  
Co-Chair



**Linda Jones, PT, PhD**  
Co-Chair



## Founding Co-Chairs



**Andy Blight, PhD**



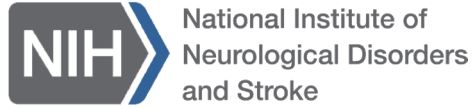
**John Steeves, PhD**



# SCOPE Partners



# SCOPE Members



# SCOPE is a Research Enabler



## Outcome Measures

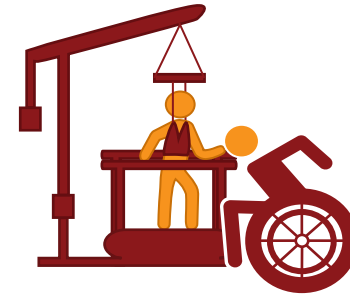
- *Understanding and improving human outcomes*
- *Improving animal ↔ human translation*



## Clinical Trial Design

- *Combinatorial*
- *Adaptive*
- *Recruitment*
- *Lessons learned*
- *Trends*

*(Defining incomplete SCI)  
(DSMB guidelines)*



## Needs Based

- *Biomarkers*
- *Focus on lived experience*

# Outcome Measures - Challenges



# Outcome Measures - Solutions

Extensive work summarizing upper and lower extremity considerations for SCI clinical trials



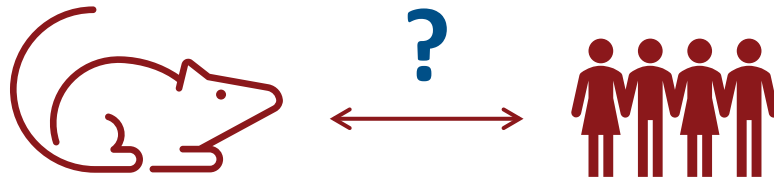
[Upper extremity outcome measures](#)  
[Jones et al. \(2017\)](#)



[Lower extremity outcome measures](#)  
[Bolliger et al. \(2018\)](#)

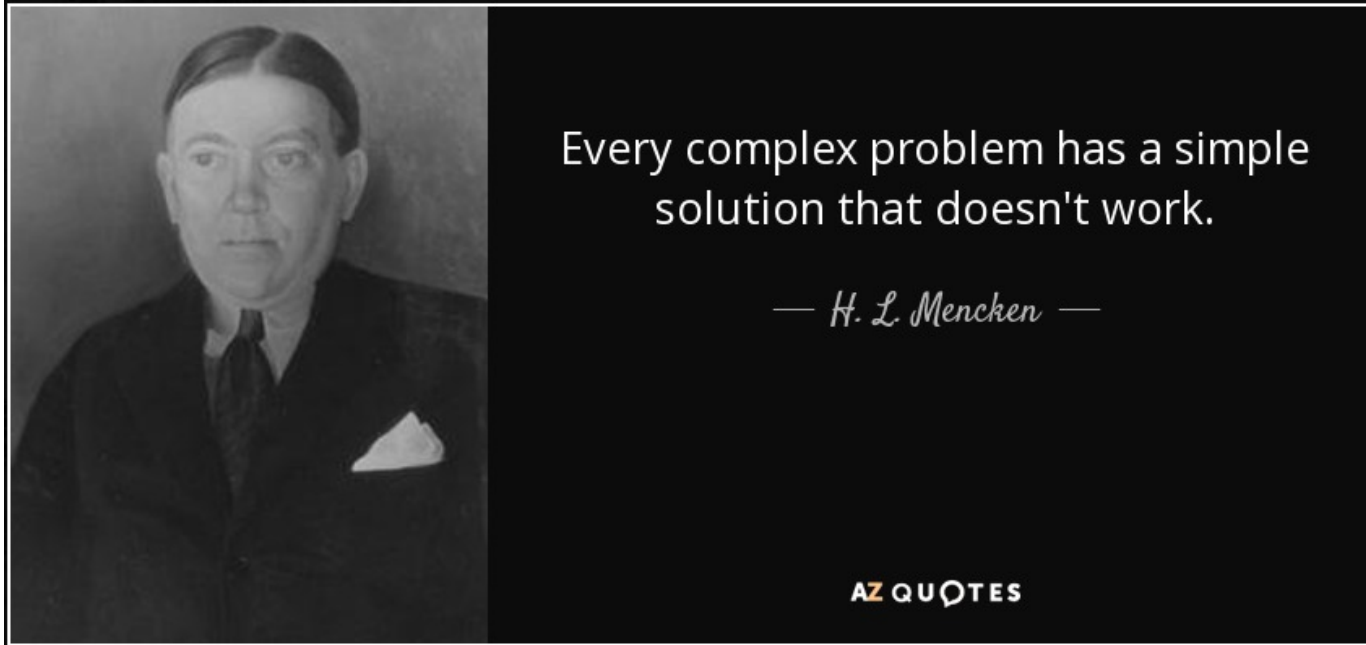
Workshop to better understand human outcomes and to improve animal translation

**ASIA**  
AMERICAN SPINAL INJURY ASSOCIATION  
2021 workshop





# Clinical Trials- Challenges

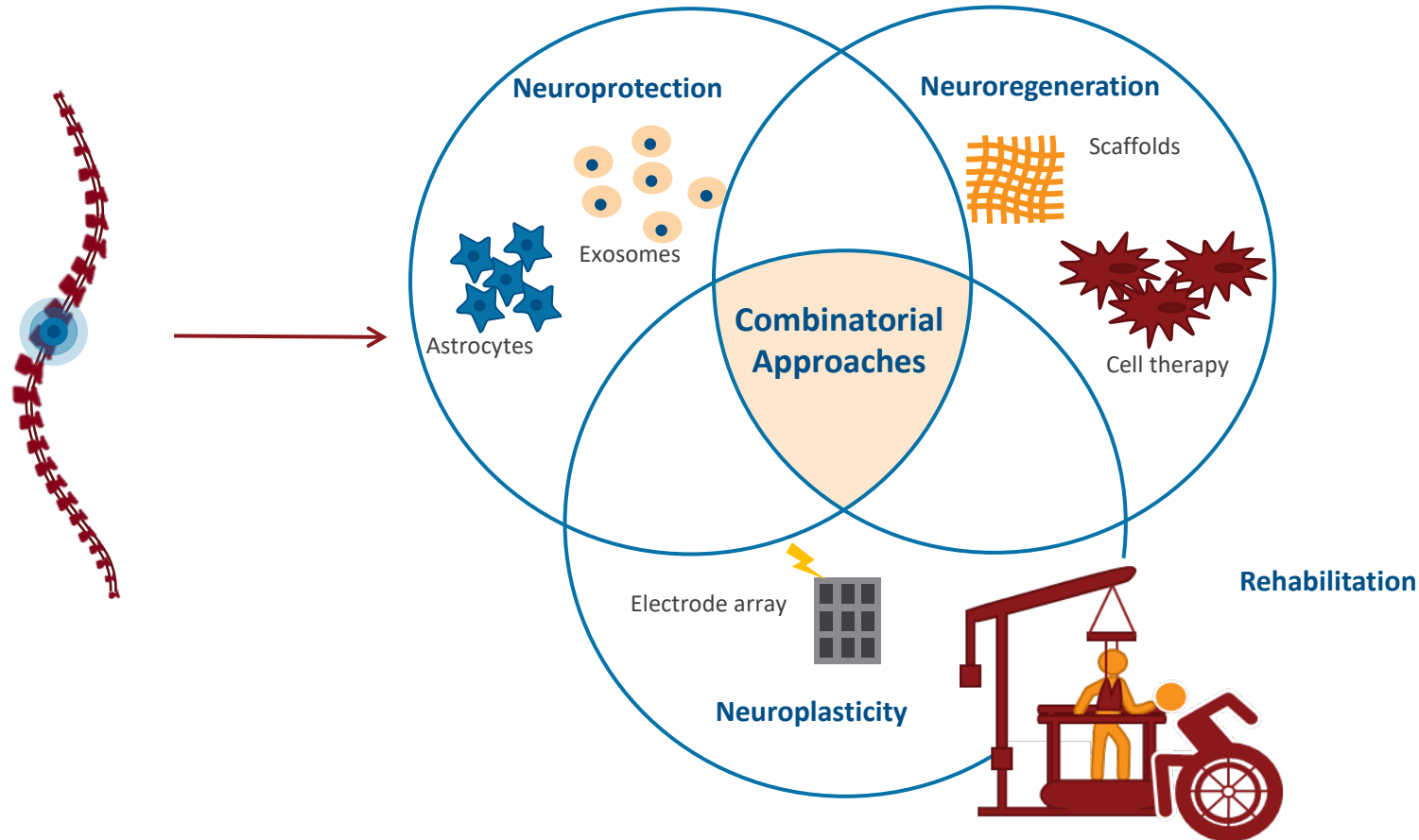


# Clinical Trial Design - Solutions

2023 workshop  **ASIA**  
AMERICAN SPINAL INJURY ASSOCIATION

Spinal cord injury

Treatment approaches



[Adaptive clinical trial designs for SCI](#)  
[Mulcahey et al. \(2020\)](#)

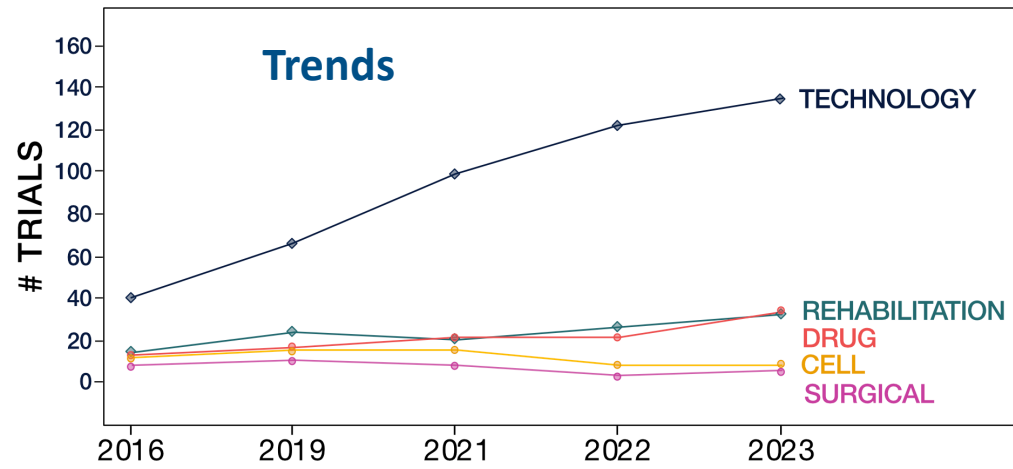
# Clinical Trials Updates and Trends - Solutions

## Future workshops

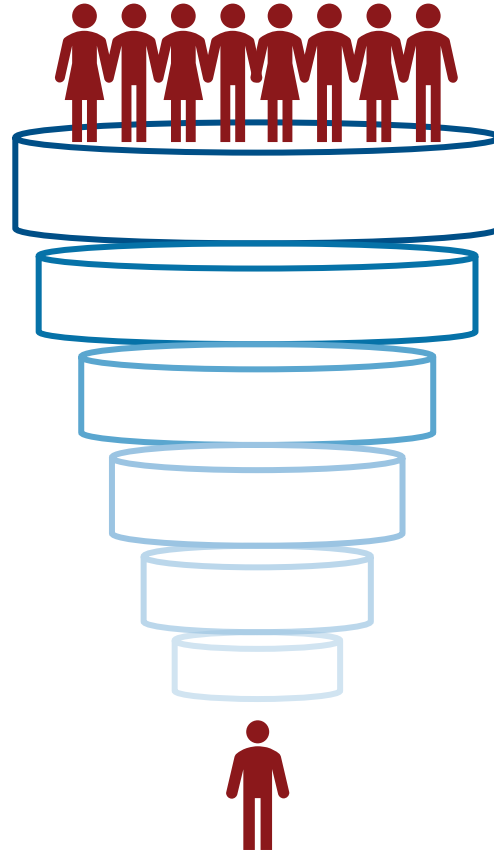


### Lessons learned

upcoming, in progress and completed clinical trials



# Recruitment - Challenges



100 identified participants

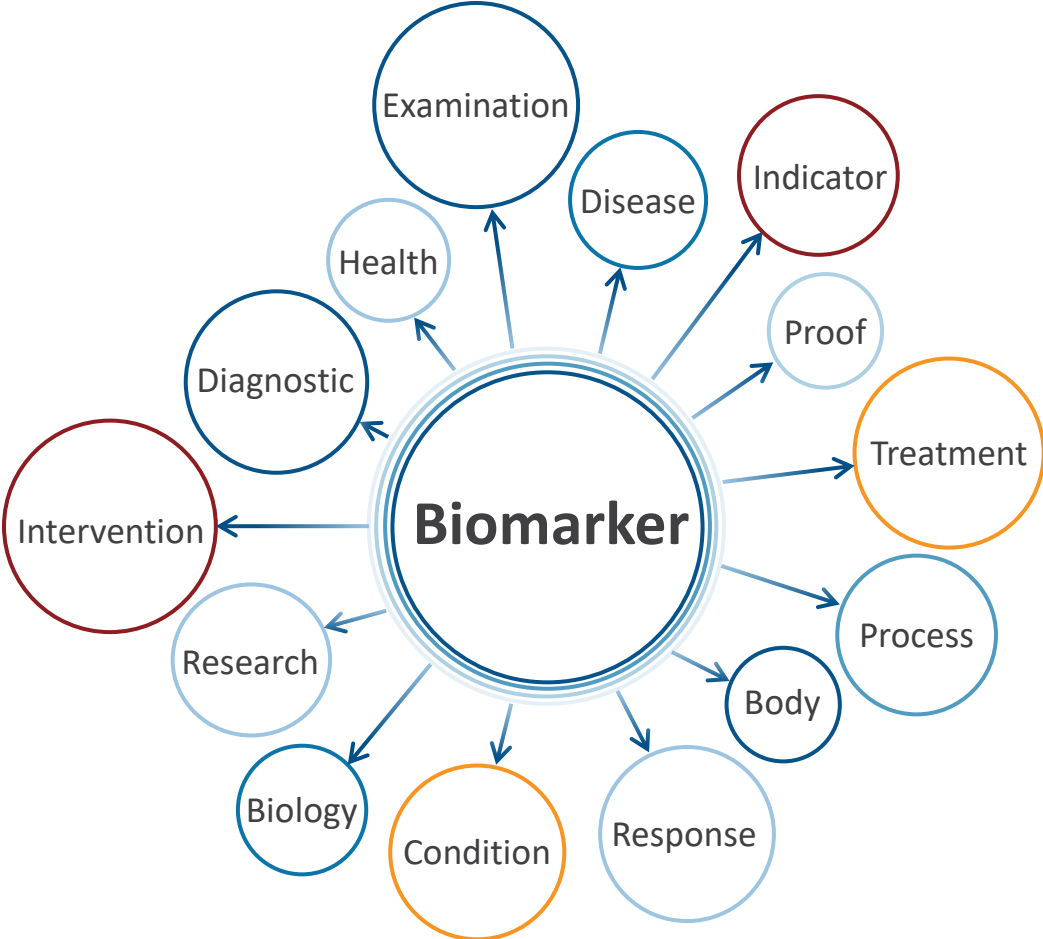
7 eligible participants

UNDER



[Recruitment  
challenges in SCI  
clinical trials](#)  
[Blight et al. \(2019\)](#)

# Biomarkers - Challenges



# Biomarker - Solutions



[Neurochemical biomarkers in SCI](#)  
[Kwon et al. \(2017\)](#)



[Neuroimaging biomarkers in SCI](#)  
[Self et al. \(2019\)](#)



[Electrophysiological measures in SCI](#)  
[Hubli et al. \(2019\)](#)

**Researched and published on areas to improve to raise awareness**



**2024 Pre-course: Molecules to Movement**

# Lived Experience Engagement - Challenges





## Engagement/Education



Actively engaging with patients and advocacy groups

## Research/Science

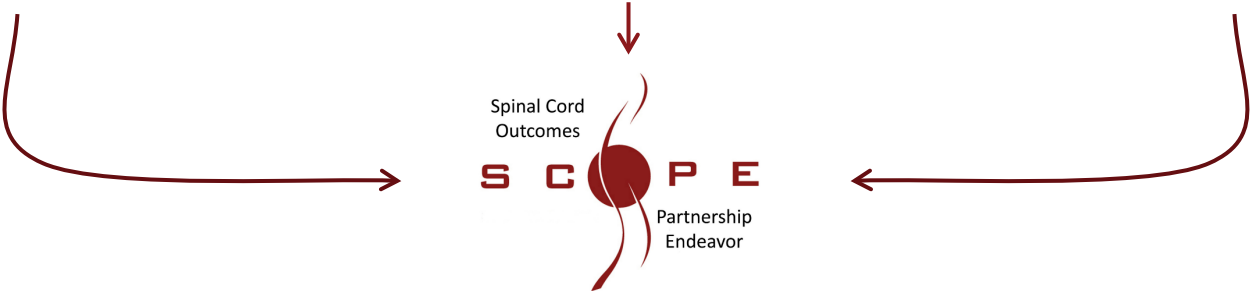


Fostering research into measurement of the patient experience

## Regulatory/Policy



Generating science-based recommendations for regulatory policy



**SCOPE is an important stakeholder in supporting the FDA's desire to promote Patient Focused Drug Development (PFDD)**



**Feedback**



Spinal Cord  
Outcomes

S C  P E

Partnership  
Endeavor

Want to partner with us? Contact us to find out more!  
Linda Jones: [linda@jonessciresearch.com](mailto:linda@jonessciresearch.com)  
Jane Hsieh: [j.hsieh@sympatico.ca](mailto:j.hsieh@sympatico.ca)